



## TalkingFields® Yield Potential Map

The **TalkingFields® Yield Potential Map** provides information about the yield potential for a specific crop type for the given site. The yield potential is the yield that can be reached with optimal nutrient supply and under given circumstances, such as soil properties and climate conditions. No additional irrigation is assumed. These boundary conditions are included in the analysis.

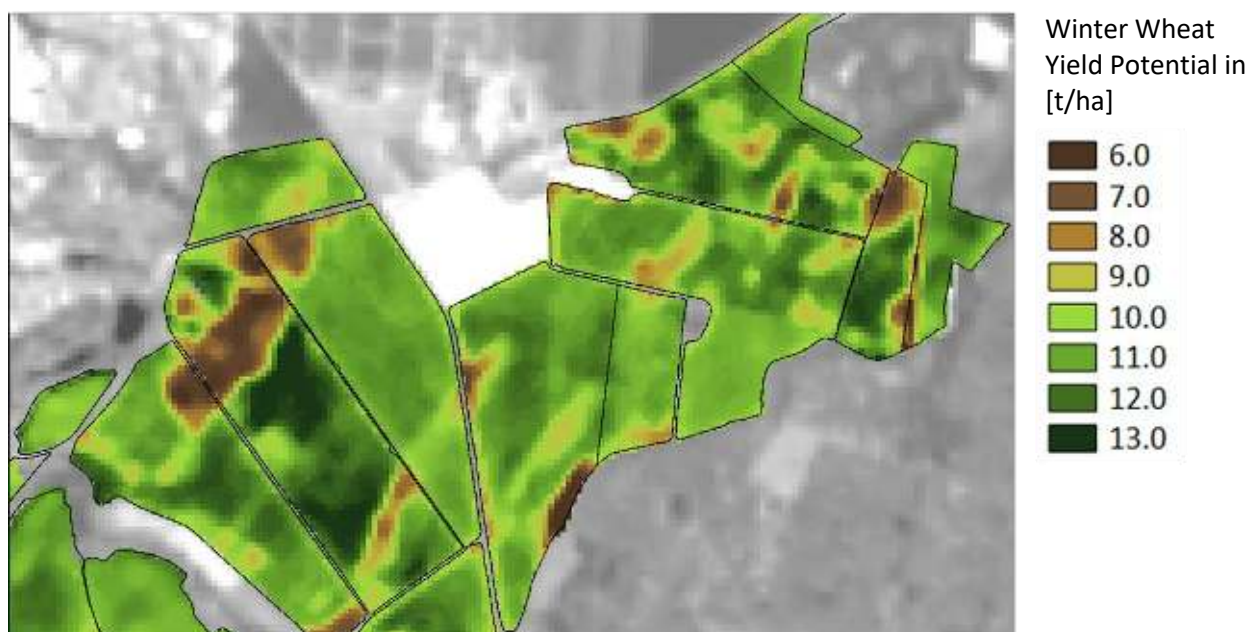
For the calculation of the yield potential, a crop growth model is used in combination with satellite imagery. The yield potential is calculated based on yield simulations for the past 15 years (hence, realistic climatic conditions for the investigated site). The heterogeneity within the field is determined using satellite observations of the past 5 to 10 years.

The yield potential therefore gives information about the yield that can be reached under optimal management.

The satellite-based **TalkingFields® Yield Potential Map**:

- Shows the calculated yield potential for a specific crop type that could be reached with optimum nutrition. The local climatic conditions are included in the analysis.
- Is based on modelling results of the past 15 years.
- The site-specific heterogeneity is derived from satellite-images of the last 5 to 10 years.
- Allows optimized planning of the target yield for fertilization measures.
- The **TalkingFields® Yield Potential Map** is available for the following crops: winter wheat, sugar beet, rape seed and maize

The **TalkingFields® Yield Potential Map** shows the maximum yield that the investigated crop type can reach under the given conditions of the location (e.g. soil properties and climatic conditions such as temperature, precipitation and radiation). The TalkingFields® Yield Potential Map contains absolute values in t/ha for each crop type, thereby allowing comparison between different fields. Sites with higher or lower yield potential in comparison to other fields can be identified. The following figure shows an example for the **TalkingFields® Yield Potential Map** for winter wheat.





Currently, we offer the processing of data for fields with a size of 1 ha and above.

The **TalkingFields® Yield Potential Map** is currently available for Germany. If you wish to order the **TalkingFields® Yield Potential Map** for other countries please contact us for further information.

When ordering this service you will receive the following products:

Product name	Description	Recommended retail price in €/ha (excl. VAT)	Unit	Output format
<b>TalkingFields® Yield Potential Map</b>	Shows the yield potential in t/ha for one or more crop types	7€* (excl. VAT)  *Combined price TalkingFields® Basemap + TalkingFields® Yield Potential Map. All additional crop types cost an additional 2 €/ha per crop type	t/ha	TalkingFields®-XML, Point-Shape-File, GeoTIFF

The delivery of the **TalkingFields® Yield Potential Map** includes:

- **TalkingFields® Yield Potential Map** for one or more crop types
- Spatial resolution is a fixed raster cell size of 10 x 10m.
- Delivery in NEXT Farming Pro compatible format or as point-shape file, which can be read by most prevalent agricultural software packages which include GIS functionality. The delivery in other formats is possible on demand.

Upon receipt of an order we require the boundaries of the ordered fields **as well as** of non-target areas within the field (e.g. hedges or groups of trees), preferably in TalkingFields®-XML- format.

Additionally, we can of course offer you the agricultural software with which you can import this data and further process it to e.g. application maps. Information on this can be found here: [www.farmfacts.de](http://www.farmfacts.de).

If you would like to place an offer or have additional questions on our products we would be pleased to take some time to get in touch with you personally.

Please use our email address [info@talkingfields.de](mailto:info@talkingfields.de) or our phone number +49 89 45 21 614 22 to contact us.

Additional information can be found at [www.talkingfields.de](http://www.talkingfields.de)