

TF Biomass Map

The **TF Biomass Map** delivers the small-scale absolute biomass distribution on winter wheat and maize fields 3 times a year.

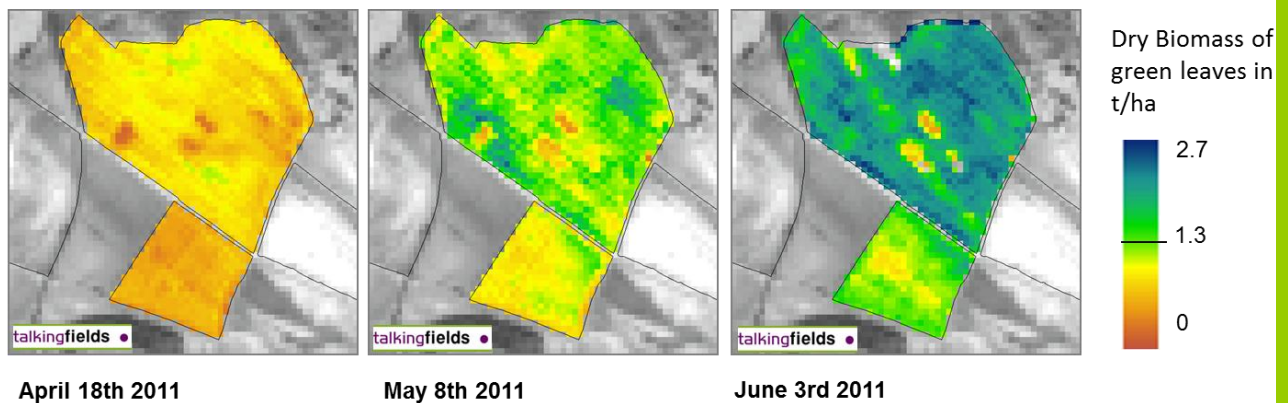
Using a crop growth model and the integration of biomass observation from up-to-date satellite imagery, the **TF Biomass Map** can be calculated for any desired date.

With the **TF Biomass Map**, the increased plant disease risk of dense canopy parts can be taken into account for the creation of application maps for plant protection measures.

The TF Biomass Map:

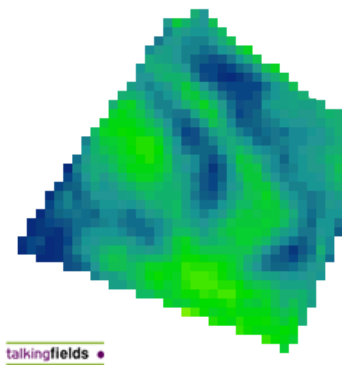
- Gives the biomass in absolute values (t/ha) for winter wheat and maize fields in a spatial resolution of 20x20m.
- Delivers absolute, spatially and temporally comparable biomass information.
- Allows an optimized risk assessment for plant disease and serves as offline information source for application maps for plant protection measures.
- Allows a continuous monitoring of leased fields for the green energy industry.

The following figure shows the biomass development in spring 2011 for winter wheat. The values of the TF Biomass Map are absolute and directly comparable.



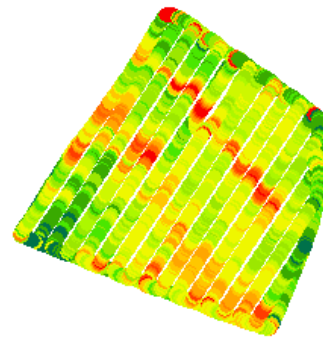
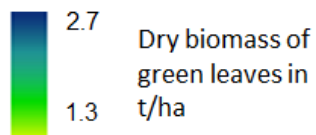
Currently, validation via comparison with field measurements as well as online sensor values of relative biomass distribution is taking place.

In the image below, you can see on the left side the biomass distribution on the **TF Biomass Map**, on the right side, you can see the field as measured with an online sensor. The spatial distribution of the biomass from both observations is congruent.

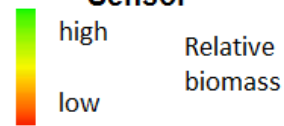


talkingfields •

TF Biomass Map



Biomass observation of N-Sensor



In opposition to online sensors, the **TF Biomass Map** delivers absolute values. The TF Biomass Map allows an optimized, site-specific risk assessment for plant disease to plan plant protection measures. Through its absolute nature, the TF Biomass Map makes a comprehensive monitoring of the biomass development on all fields possible.

The **TF Biomass Map** is expected to be ready for a wider market in the harvest year 2013. Until then, we test and validate the TF Biomass Map in close cooperation with selected demo farms.

If you are nevertheless already now interested in this product, please contact us for further information at info@talkingfields.de or call us at +49 89 28 77 95 24.

Additional information can be found at www.talkingfields.de.